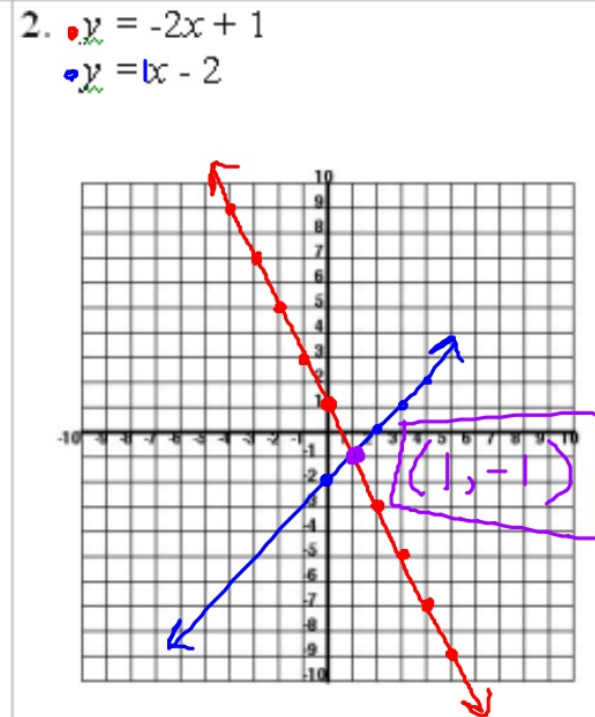
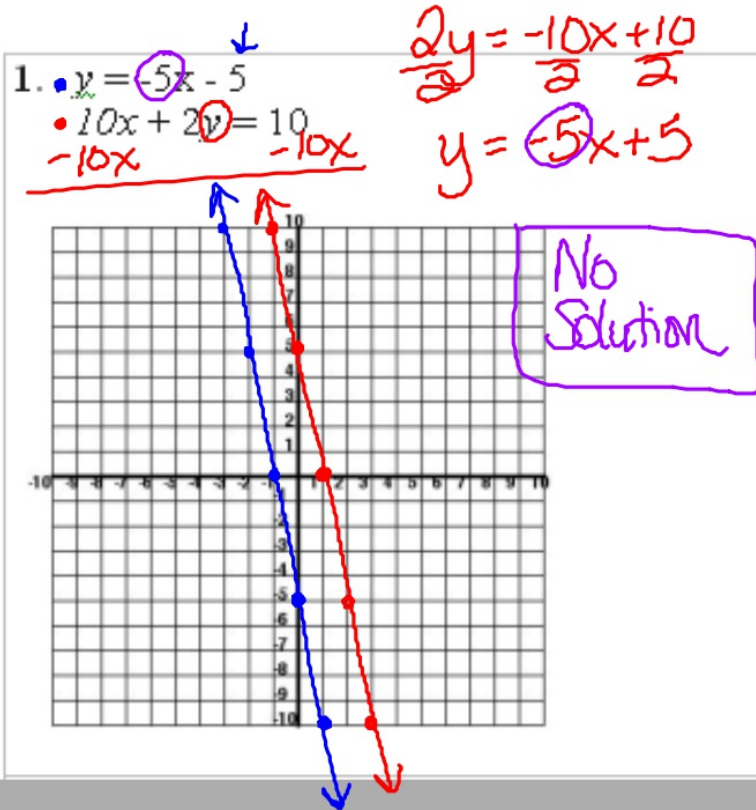


3.1 Warm-up / Review

Helpful Video

Solve each system by graphing. Then state whether the system has *one solution*, *infinitely many solutions* or *no solution*.



3. • $y = -2x + 7$

$2y - 1 = -4x + 13$

$$\begin{array}{r} +1 \\ \hline 2y = -4x + 14 \\ \hline \end{array}$$

$y = -2x + 7$



Many Solutions

4. $y = -3x + 3$

$y = 2x - 7$

