

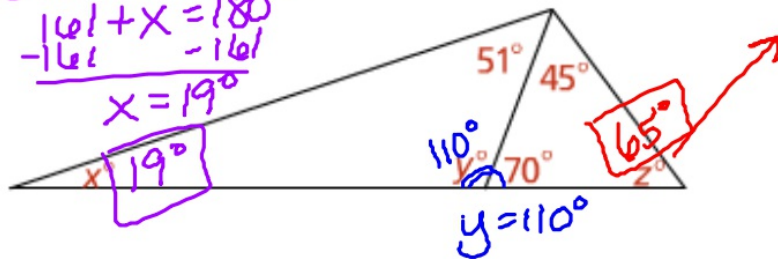
3.5 Review - Warm - up

1. Solve for x , y , and z .

$$51 + 110 + x = 180$$

$$\begin{array}{r} 161 + x = 180 \\ -161 \quad -161 \\ \hline \end{array}$$

$$x = 19^\circ$$



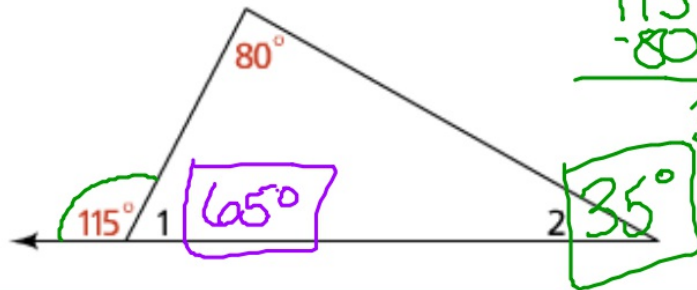
$$70 + 45 + z = 180$$

$$115 + z = 180$$

$$\begin{array}{r} 115 + z = 180 \\ -115 \quad -115 \\ \hline \end{array}$$

$$z = 65^\circ$$

2. What are the measures of $\angle 1$ and $\angle 2$?



$$115 = 80 + m\angle 2$$

$$\begin{array}{r} 115 = 80 + m\angle 2 \\ -80 \quad -80 \\ \hline \end{array}$$

$$35 = m\angle 2$$

3. Your friend makes a flag as shown below. He claims that the green fabric forms an isosceles triangle. Is your friend correct? Explain. If your friend is incorrect, how can he cut out his fabric to fix the error? (Hint: An isosceles triangle has at least two angles of equal measure.)

